



Smart Bar USA[®]

Where Mixology Meets Technology!

THE FUTURE OF BEVERAGE INNOVATION!

SMARTENDER[®]



**Automated Cocktail
Dispensing System**

A SERIES

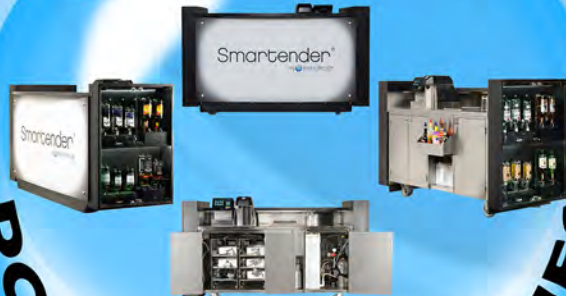
SMARTENDER[®]



**Perishable Mixers
Storage System
Automated Cocktail
Dispensing System**

CHILL SERIES

SMARTENDER[®]



**FULLY SELF-CONTAINED
MODEL**

PORTABLE GO SERIES

SMARTENDER[®]



SELF-SERVE MADE EASY

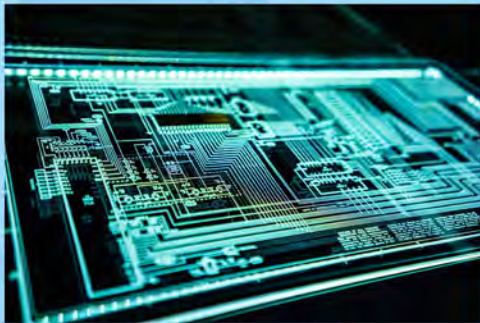
SELF-SERVE SERIES

The Perfect Cocktail Every Time!

Smartender® the industry leading automated cocktail dispensing system, delivering operational efficiencies, speed of service, pouring accuracy, and reduced operating costs to any beverage program.

Smartender® fits into: Restaurants, Bars, Taverns, Dining Halls, Event Centers, Catering, Casinos, Theatres, Cinemas, Family Entertainment Centers, Stadiums, Arenas, Theme and Amusement Parks, plus many more venues!

Example Client List:



Software: Our patented software allows for maximum flexibility with a user management function that's equipped with do-it-yourself instructions for easily creating recipes, adjusting pour and glass sizes, and establishing multi-level security features to prevent unauthorized changes. The lead/support feature permits multi-unit changes through one machine (lead), then transfer to all other machine on the network.



SCAN ME



Technology: **Smartender®** provides seamless operation and multi-unit management - interfacing with most POS systems.



SCAN ME



QR Code Ordering: **Smartender®** is compatible with consumer-based ordering systems.



SCAN ME

Smartender® A Series



SCAN ME

ELEVATE YOUR BAR ELEVATE YOUR BUSINESS!



Imagine stepping into the coolest bar in town, uniquely branded and fueled by automation and innovation; that's **Smartender®** by **Smart Bar USA®** - It's not just about mixing perfect drinks; it's about transforming your space, enhancing the guest experience, and creating an unforgettable vibe. **Smartender®** isn't your regular bar, it's a game-changer for your business, streamlining operations, improving speed-of-service, mitigating waste and loss all while maximizing your profits. Its streamline, modular design is aesthetically pleasing and intended for Front-of-House and Back-of-House.



A800 Up to 8 different liquors/wines.



A1800 Up to 18 different liquors/wines.



A3400 Up to 34 different liquors/wines.



A5000 Up to 50 different liquors/wines.

OPERATIONAL SAVINGS MADE EASY!

- Average 6% improvement in Liquor Costs!
- 30% increase in Server Efficiencies!
- Higher Guest Satisfaction!
- Eliminates Theft!
- Mitigates Waste!
- Pour Exact Recipes to 1/16th oz!
- Pouring Speeds under 4 seconds!
- Reduced Labor!
- No Bartending Experience Needed!

Key Features

- Patented pouring nozzle provides quality product taste for all ingredients.
- Advanced drink modifier recognition to interface with the most unique POS setups.
- Custom cocktail feature allows for any called cocktail to quickly be built and dispensed to the guests request.
- Remote machine management and reports via the **Smartender® Ops Service** when online.
- Simple operation with customizable prompts throughout the pouring process.
- Simultaneous pouring of liquors and mixers result in an average pour time of 4 seconds per drink.
- Accurate liquor pours to within 1/16th of an ounce.
- Customizable alcohol service schedule allows or denies access by date and time.
- Compatible with consumer-based ordering and payment processing technology.

Liquor Supply & Delivery



SCAN ME

Smartender® integrates with any existing pump room, liquor or wine supply system. It can also be used with the **Smartender**® LS300 Liquor Delivery Trough or the **Smartender**® LS800 Liquor Delivery Rail (LDR).

Smart Bar USA® can build custom pump rooms, either rack or wall mounted, using our 3-bottle trough or our under counter mounted liquor delivery rails.



LS300 Liquor Delivery Trough

Designed for medium and high-volume applications, the LS300 allows the delivery of three bottles sequentially to the **Smartender**® unit before refill.



LS800 Liquor Delivery Rail (LDR)

Designed to be installed in the most confined spaces (Under Counter/In Cabinet). Dispenses eight liquors, one bottle per liquor brand and includes bottle empty function.

Back-of-House Pump Rooms & Local Delivery Systems

Smart Bar USA® can design and build your custom pump rooms, using rack or wall mounted 3-bottle well trough systems or we can install our liquor delivery rails.



Smartender® CHILL



ELEVATE YOUR POUR
ELEVATE YOUR EXPERIENCE!



Key Features

- Effortlessly integrates with existing water and carbonated systems; enhancing your beverage service with ease and efficiency.
- Our Innovative and Patented pouring nozzle provides quality product taste for all ingredients.
- Interactive display alerts for low or depleted liquor levels.
- Adaptable selections; mix and match liquors and mixers, to tailor drinks to customer preferences. Guaranteeing a superior cocktail experience.
- Sophisticated drink modifier recognition, compatible with even the most distinctive Point-of-Sale configurations.
- Simultaneous pouring of liquors and mixers result in an average pour time of 4 seconds per drink.
- Precision liquor dispensing, accurate to within 1/16th of an ounce.
- Undercarriage chill unit ensures that all alcohol and mixers are kept cold for optimal flavor and freshness.

Crafted in collaboration with Lancer Worldwide the coolest bar in town just got a whole lot cooler. The **Smartender® CHILL** from **Smart Bar USA®**, brings together all of the benefits of the original **Smartender® - Automated Cocktail Dispensing System**, but now with the added enhancement of built-in refrigeration. Available in a dual-door or single-door refrigerated option. It has been designed for perishable mixers or for the storage of chilled spirits. The streamline, modular design is aesthetically pleasing and intended to be placed in either the **Front-of-House or Back-of-House**.

OPERATIONAL SAVINGS MADE EASY!

- 6% improvement in Liquor Costs!
- 30% increase in Server Efficiencies!
- Higher Guest Satisfaction!
- Eliminates Theft!
- Mitigates Waste!
- Pour Exact Recipes to 1/16th oz!
- Pouring Speeds under 4 seconds!
- Reduced Labor!
- No Bartending Experience Needed!

Smartender® GO



THE POWER OF PORTABILITY!

Smartender® GO is the most advanced automated and small form-factor bar that is both portable and completely self-contained.

Perfect for operators with limited space or who have the need to vary beverage service location, the **Smartender® GO** delivers the ultimate blend of cocktail-pouring power and convenience.



Key Features

- Fully self-contained unit with onboard water, water filter, waste tank, liquor supply (Dispenses 8 distinct liquor brands - holding 24 - 1.75L Bottles), mixer supply (Fits up to 6 standalone 2.5 and 5 gallon bag-in-boxes), ice bin, CO², and Carbonator.
- Adjustable mixer bay designed to hold the most common Coke and Pepsi Bag-in-Box sizes.
- On-Screen liquor low and bottle empty notification.
- Patented pouring nozzle provides high quality product taste, for all ingredients.
- Simultaneous pouring of liquors and mixers result in an average pour time of 4 seconds per drink.
- Accurate liquor pours to within 1/16th of an ounce.
- Advanced drink modifier recognition to interface with the most unique Point of Sales setups.
- Remote machine management and reports via **Smartender®** Ops Service when online during use.
- Accessory outlets within the cart for point-of-sale station and printer.

Smartender® Self-Serve

SELF-SERVICE MADE EASY!



SCAN ME

Smartender® Self-Serve brings cocktail convenience to any establishment looking for self-service beverage solutions.

Delivering complete flexibility and freedom, the **Smartender®** Self-Serve allows users to easily order and collect their cocktail of choice using the latest in mobile ordering and pouring technology.

Available in mounted and portable configuration packages including single and twin head dispenser and terminals.



Smartender® Self-Serve (Single)



Smartender® Self-Serve DUO (Twin Head)



Smart Bar USA®

Where Mixology Meets Technology!



SCAN ME

Sales & Marketing

2920 N. Green Valley Pkwy
Suite #114
Henderson, NV 89014
USA

Manufacturing Facility

7485 Dean Martin Dr.
Suite #104
Las Vegas, NV 89139
USA

Contact

Inquiries: +1 702.456.4724
24hr Service: +1 866.399.7260
contact@smartbarusa.com
www.smartbarusa.com



US & Foreign Patents & Patent Pending Numbers:

US8584900, US8651333, US8746507, US9371219, US9776848, US9652756, US10399841, US11,912,558, GB2483129, JP5878467, J/001782, ZL201080003573.X, MX332670, HK1181739, AT2582616, BE2582616, CH2582616, DK2582616, FR2582616, GB2582616, IT2582616, NL2582616, CA2803146, JP5863787, ES2554501, SE2582616, AU2011271145, SG186263, IN422903, BR112012032780-1, ZL201180030544.7, DE602011021248.6, MX336235, CA2803148, JP6049018, J/002046, HK13109236.0, AU2011271058, SG186265, ZL201180030469.4, J/002279, PCT/US2022/020132, CA3211901, AU2022234979, MXMXa2023010713, JP2023556521, SG11202306789R, EP22768153.3